

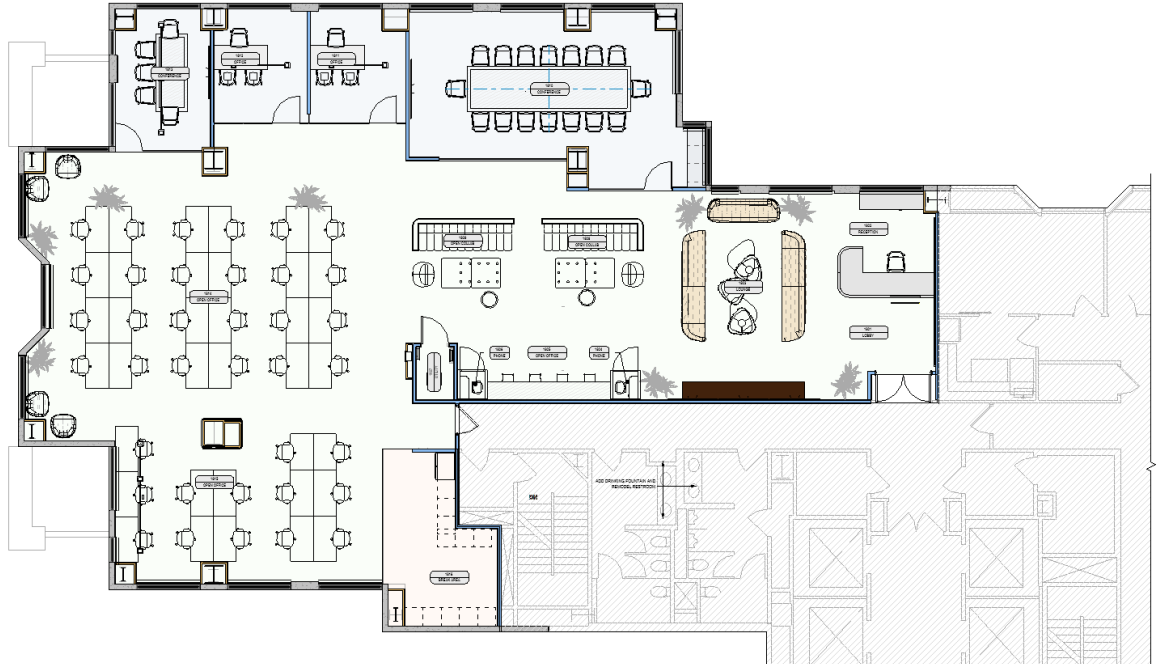
33
NM

33 NEW
MONTGOMERY
SF | CA

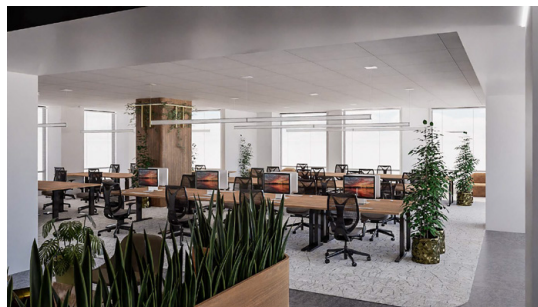


5,984 RSF | AVAILABLE SEPT. 2026

SUITE 1800



- Available September 2026
- Plug & Play
- Spec Suite Underway
- Double Door Identity
- 3 Offices/Meeting Rooms
- 1 Large/2 Medium Conference Rooms
- Open Kitchen/Break Area
- Large Open Area for 24 Desks



MARK ANDERSON

+1 415 713 1014

mark.anderson@cushwake.com

lic# 01325399

SAM WASSERSTEIN

+1 415 773 3528

sam.wasserstein@cushwake.com

lic# 01798616

ELENA SACCONI

+1 630 699 9687

elena.sacconi@cushwake.com

lic# 02151049

**CUSHMAN &
WAKEFIELD**

RIDGE
CAPITAL INVESTORS