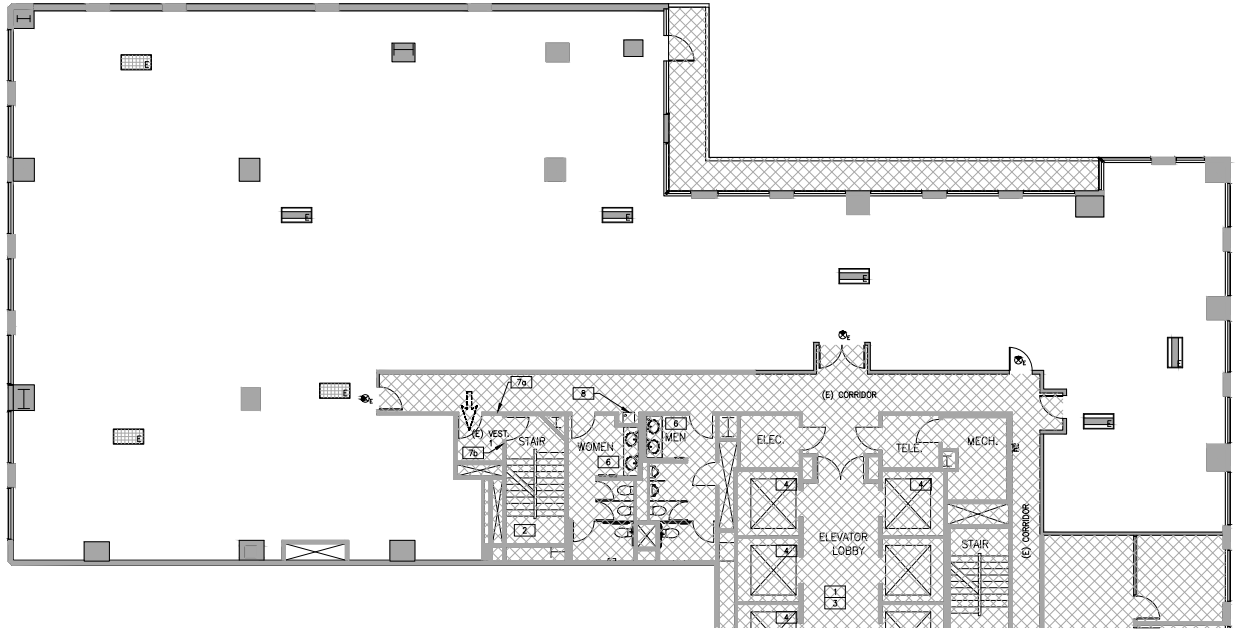


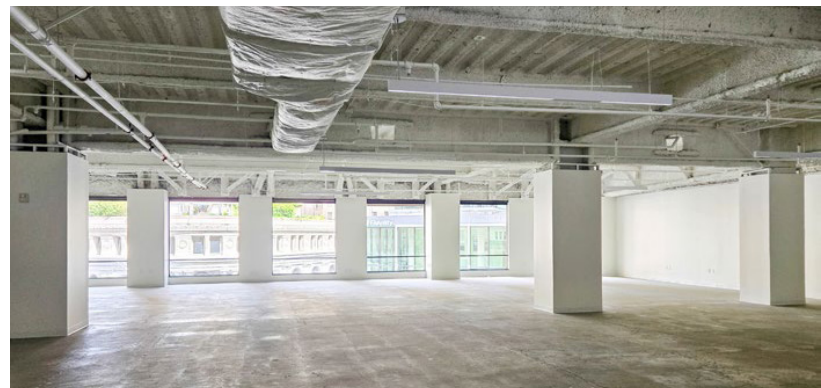
**33
NM**

10,373 RSF | AVAILABLE NOW SUITE 300

**33 NEW
MONTGOMERY**
SF | CA



- Available Now & Ready for Improvements
- Double Door Identity
- Warm Shell Condition
- Landlord to Provide a Turnkey Allowance Deal



SAM WASSERSTEIN

+1 415 773 3528

sam.wasserstein@cushwake.com

lic# 01798616

MARK ANDERSON

+1 415 713 1014

mark.anderson@cushwake.com

lic# 01325399

ELENA SACCONI

+1 630 699 9687

elena.sacconi@cushwake.com

lic# 02151049

**CUSHMAN &
WAKEFIELD**

RIDGE
CAPITAL INVESTORS